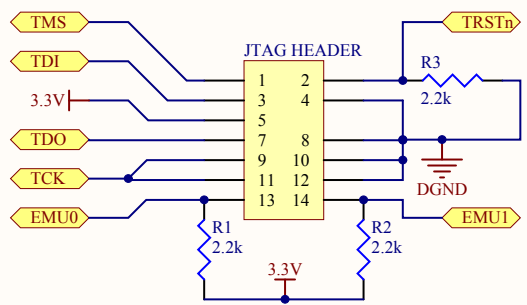
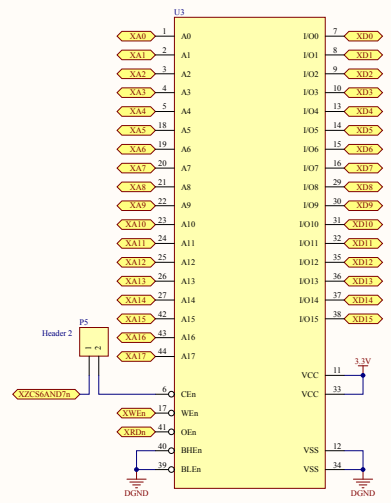


Title		
Size	Number	Revision
C		
Date	1/16/2013	Sheet of
File	C:\Users\Narhan\Altium\Codecs\SchDoc	Drawn By

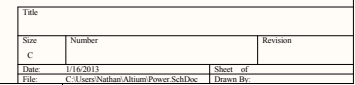


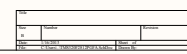
Title			
Size A	Number		Revision
Date:	1/16/2013		Sheet of
File:	C:\Users\Nathan\Altium\JTAG.SchDoc		Drawn By:



Title		
Size	Number	Revision
C		
Date	1/16/2013	Sheet of
File	C:\Users\Member\Documents\SchDoc	Drawn By







Comment	Description	Designator	Footprint	LibRef	Quantity
Probe Point		3.3V, AGND, DGND	Probe Point	Probe Point	3
Cap Semi	Capacitor (Semiconductor SIM Model)	C1, C2, C3, C22, C23, C24, C25, C26	0603	Cap Semi	8
Cap Pol3	Polarized Capacitor (Surface Mount)	C4	0603 Tant	Cap Pol3	1
Cap Pol3	Polarized Capacitor (Surface Mount)	C5, C6, C7, C8, C9, C10, C11, C12, C13, C14, C15, C16, C17, C18, C19, C20, C21	0603	Cap Pol3	17
SJ1-3514N	3.5mm Stereo Jack	J1, J2, J3	SJ1-3514N	SJ1-3514N	3
5227677-1	BNC Connector	J4, J5, J6	5227677-1	5227677-1	3
Header 7X2	Header, 7-Pin, Dual row	JTAG HEADER	HDR2X7	Header 7X2	1
GREEN	Typical RED, GREEN, YELLOW, AMBER GaAs LED	L1, L2, L3, L4, L5, L6, L7, L8, L9	GRN_LED	LED2	9
LOWVOLTAGE	Typical RED, GREEN, YELLOW, AMBER GaAs LED	LV	RED_LED	LED2	1
Header 25X2	Header, 25-Pin, Dual row	OUTS1, OUTS2	HDR2X25	Header 25X2	2
Header 2	Header, 2-Pin	P4, P5	HDR1X2	Header 2	2
PJ-102A	Power Connector	PWR	PJ-102A	PJ-102A	1
PNP	PNP Bipolar Transistor	Q2	SOT-23B_N	PNP	1
MOSFET-N	N-Channel MOSFET	Q3	BSS138ZXC-T-ND	MOSFET-N	1
R10	Resistor	R1, R2, R3, R4, R5, R6, R7, R8, R9, R10, R11	0402	Res3	11
Res3	Resistor	R12, R13, R14, R15, R16, R17, R18, R19, R20, R21, R22, R23, R24, R25, R26	0402	Res3	15
SPDTx2	Dual SPDT	S1	CAS-220	SPDTx2	1
RESET	Switch	S7	PushButton	SW-PB	1
SW-DPDT	Double-Pole, Double-Throw Switch	S8	CAS-220	SW-DPDT	1
SW-SPDT	SPDT Subminiature Toggle Switch, Right Angle Mounting, Vertical Actuation	S9	CJS-1200TA	SW-SPDT	1
TLV320AIC23BPW	Codec	U1	28HTSSOP	TLV320AIC23BPW	1
CB3LV-3C-18M4320	18.432MHz Clock	U2	CB3LV-3C-18M4320	CB3LV-3C-18M4320	1
CY7C1041CV33-12ZC	External Memory	U3	44TSOPII	CY7C1041CV33-12ZC_Rev2	1
SN75469D	Darlington Array	U4	P-SOP18-0812-1.27-001	SN75469D	1
TPS767D301QPWPRQ1_Rev2	Power Supply	U5	28HTSSOP	TPS767D301QPWPRQ1_Rev2	1
TMS320F2812PGFA_Rev2	DSP	U6	Quad176	TMS320F2812PGFA_Rev2	1
SN74AHC1G14DBVR	Schmitt Inverter	U7	5 Lead SOT-23	SN74AHC1G14DBVR_Rev2	1
MCP6566	Comparator	U8	5 Lead SOT-23	MCP6566	1
30MHz	Crystal Oscillator	XTAL	30MHz XTAL	XTAL	1